



Southport Connector Expressway Project Development & Environment (PD&E) Study

Poinciana Community Development District

— **March 30, 2021** —

Glenn Pressimone, PE, CFX Chief of Infrastructure
Ralph Bove, Volkert, Inc.

Agenda

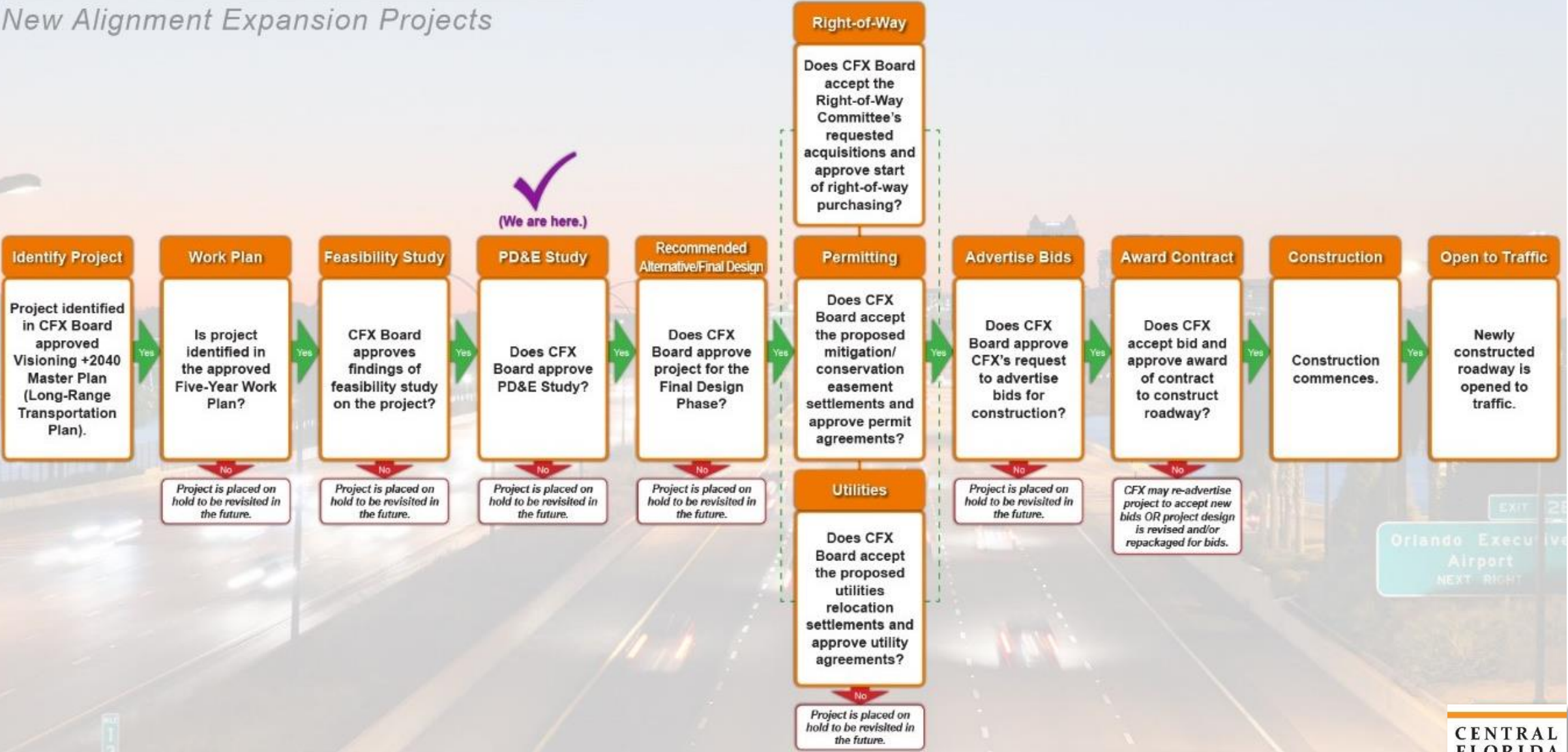
- Project History
- CFX Project Development Process
- Project Goals and Objectives
- PD&E Study Process
- Project Phasing
- Public Involvement
- Study Area
- Next Steps

Project History

- South Lake Toho Master Plan (Osceola County)
Adopted February 2010
- Osceola County Expressway Authority Master Plan
Adopted August 2013
- Southport Connector Alternative Corridor Evaluation (FDOT)
Adopted October 2015
- CFX Visioning + 2040 Master Plan
Adopted May 2016
- Southport Connector Concept, Feasibility, and Mobility Study (CFX)
Adopted May 2018
- Southport Connector Expressway PD&E Study (CFX)
Initiated September 2020

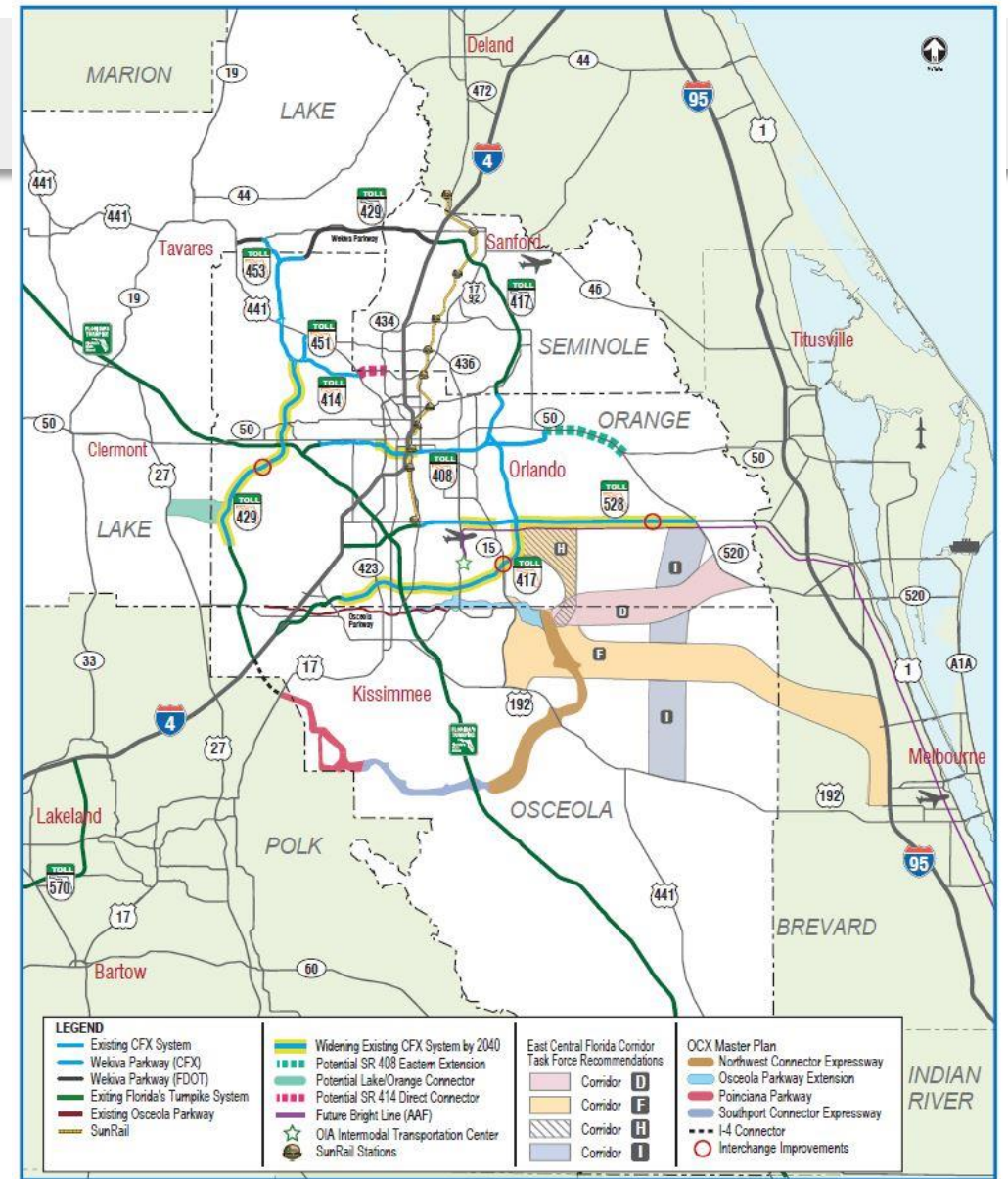
PROJECT DEVELOPMENT PROCESS

New Alignment Expansion Projects



Goals and Objectives

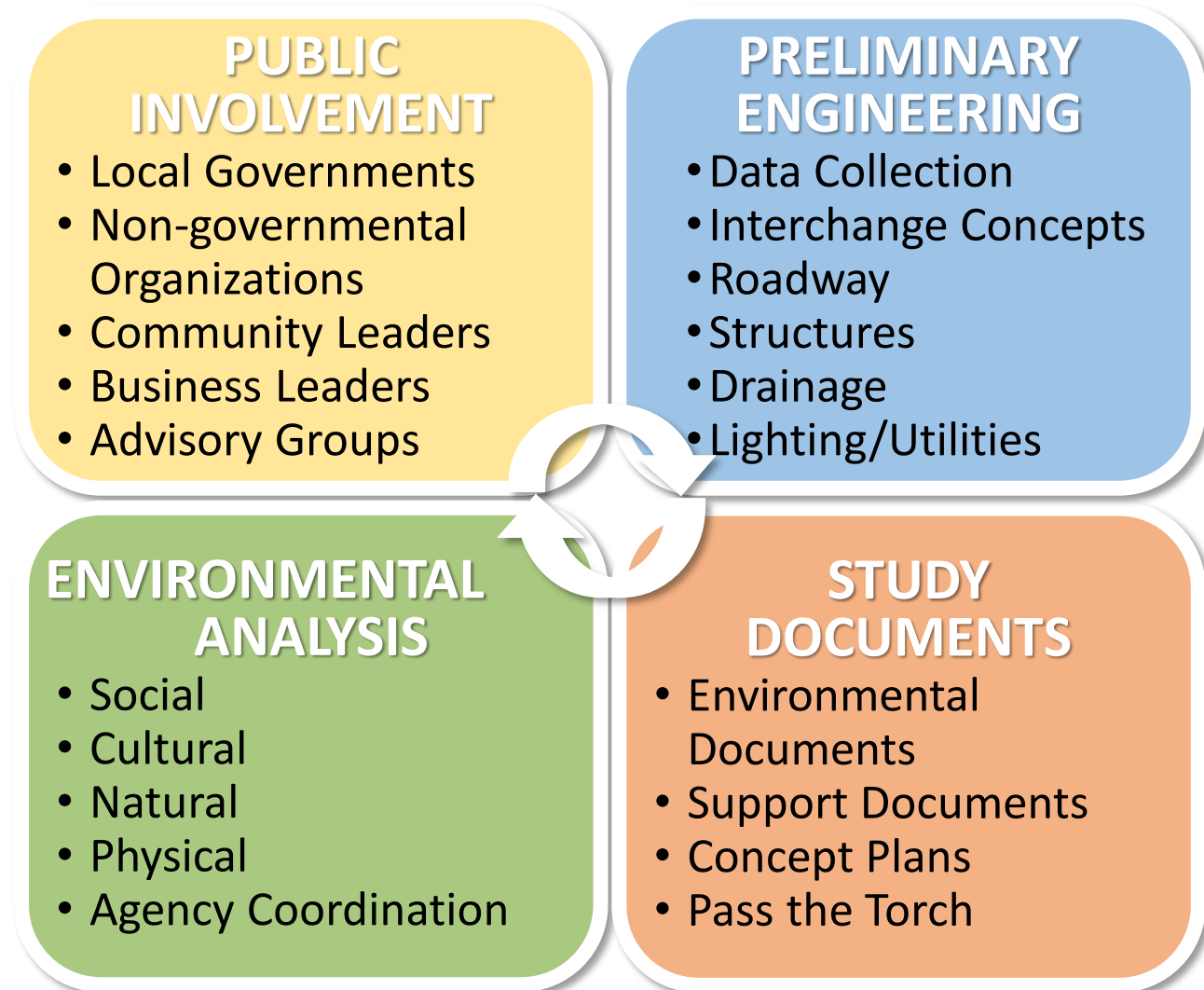
- Improve connections to existing corridors
- Enhance mobility of growing population and economy
- Relieve capacity constraints along Cypress Parkway
- Provide for incorporation of transit options
 - Local, State and Regional plans
 - Close coordination with future land use development
- Promote regional connectivity
- Enhance evacuation and emergency service



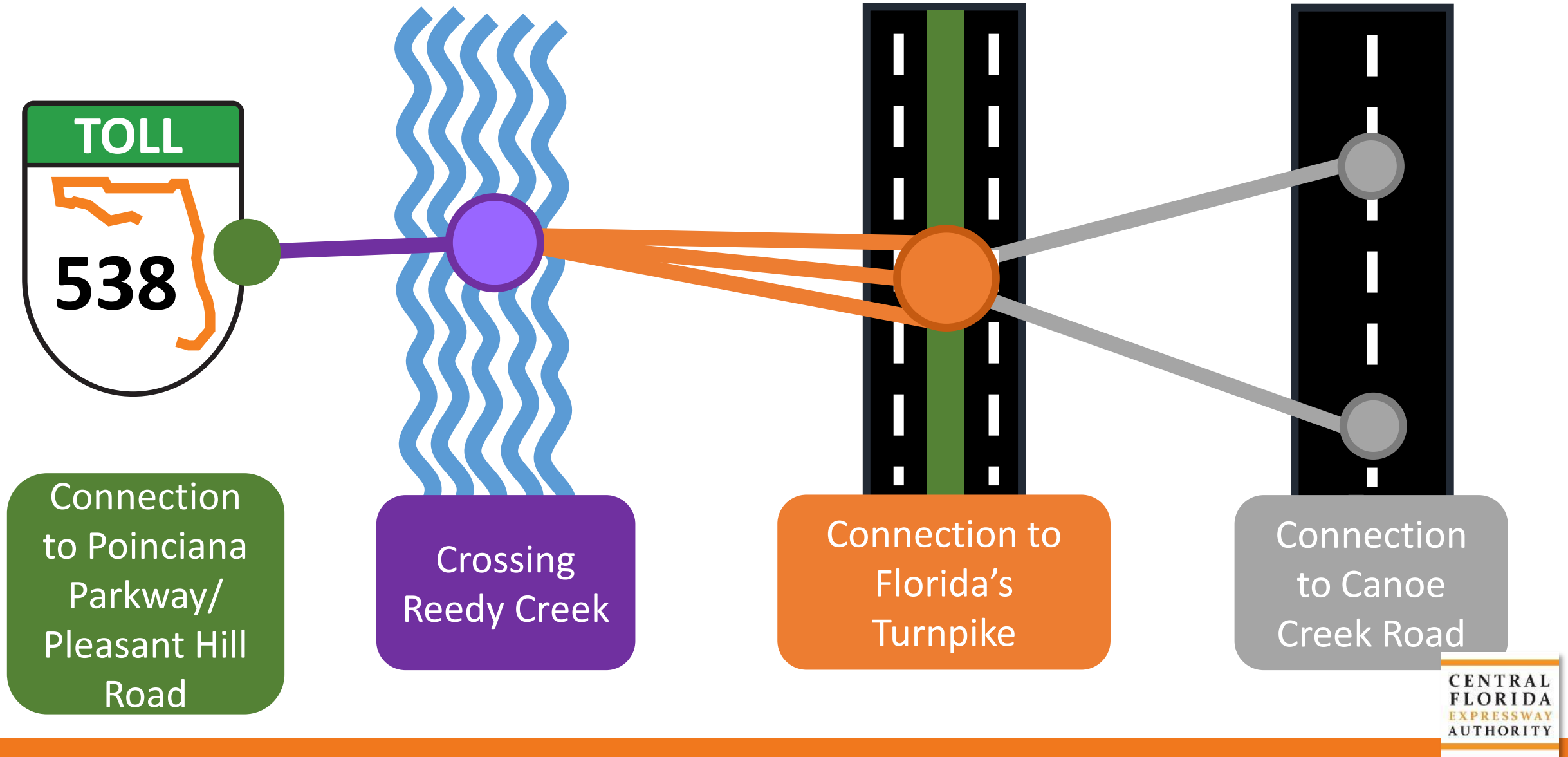
Source: CFX Visioning + 2040 Master Plan

PD&E Study Process

- Public Involvement
- Engineering Analysis
- Environmental Analysis
- Study Documents

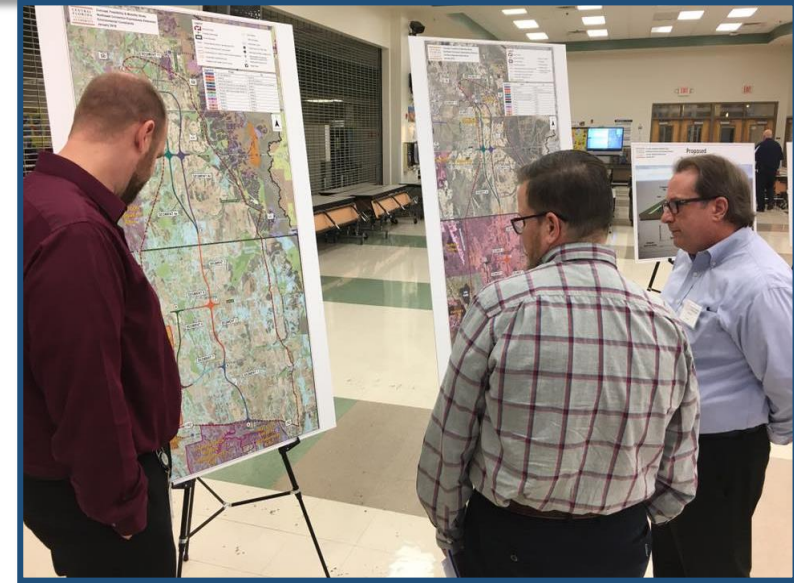


Connecting the Dots: Decision Points



Public Involvement

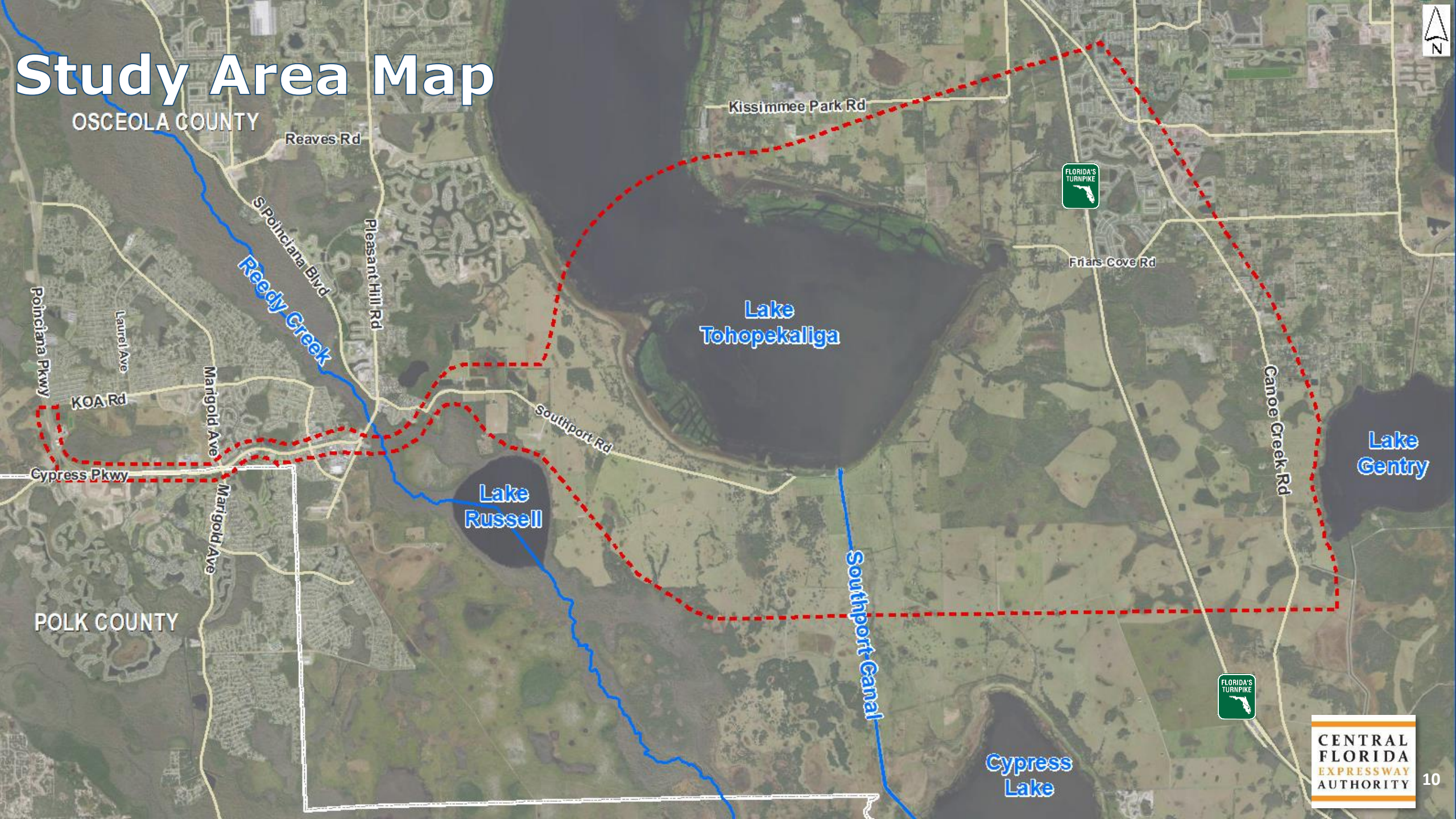
- Multiple opportunities for involvement
- Environmental & Project Advisory Groups
- Public meetings
- Board presentations
 - CFX, Polk & Osceola Counties, MetroPlan Orlando, Polk Transportation Planning Organization
- Stakeholder meetings
- CFX study web page



Agency and Stakeholder Coordination



- ✓ SFWMD
- ✓ US Army Corps of Engineers
- ✓ Doc Partin Ranch
- ✓ Bronson Ranch
- ✓ US Coast Guard
- ✓ Southport Ranch
- ✓ US Fish & Wildlife Service
- ✓ Florida Audubon
- ✓ The Nature Conservancy
- ✓ Green Island Ranch
- ✓ Kenansville Ranch
- ✓ Florida's Turnpike
- ✓ Polk County
- ✓ Osceola County
- ✓ Environmental Stewardship
- ✓ Polk County BOCC
- ✓ Osceola County BOCC
- ✓ Environmental Advisory Group
- ✓ Project Advisory Group
- ✓ Environmental Stewardship



Study Area Map

OSCEOLA COUNTY

Reaves Rd

Kissimmee Park Rd



Friars Cove Rd

S Poinciana Blvd
Reedy Creek

Pleasant Hill Rd

Lake Tohopekaliga

Southport Rd

Lake Russell

Lake Gentry

Southport Canal

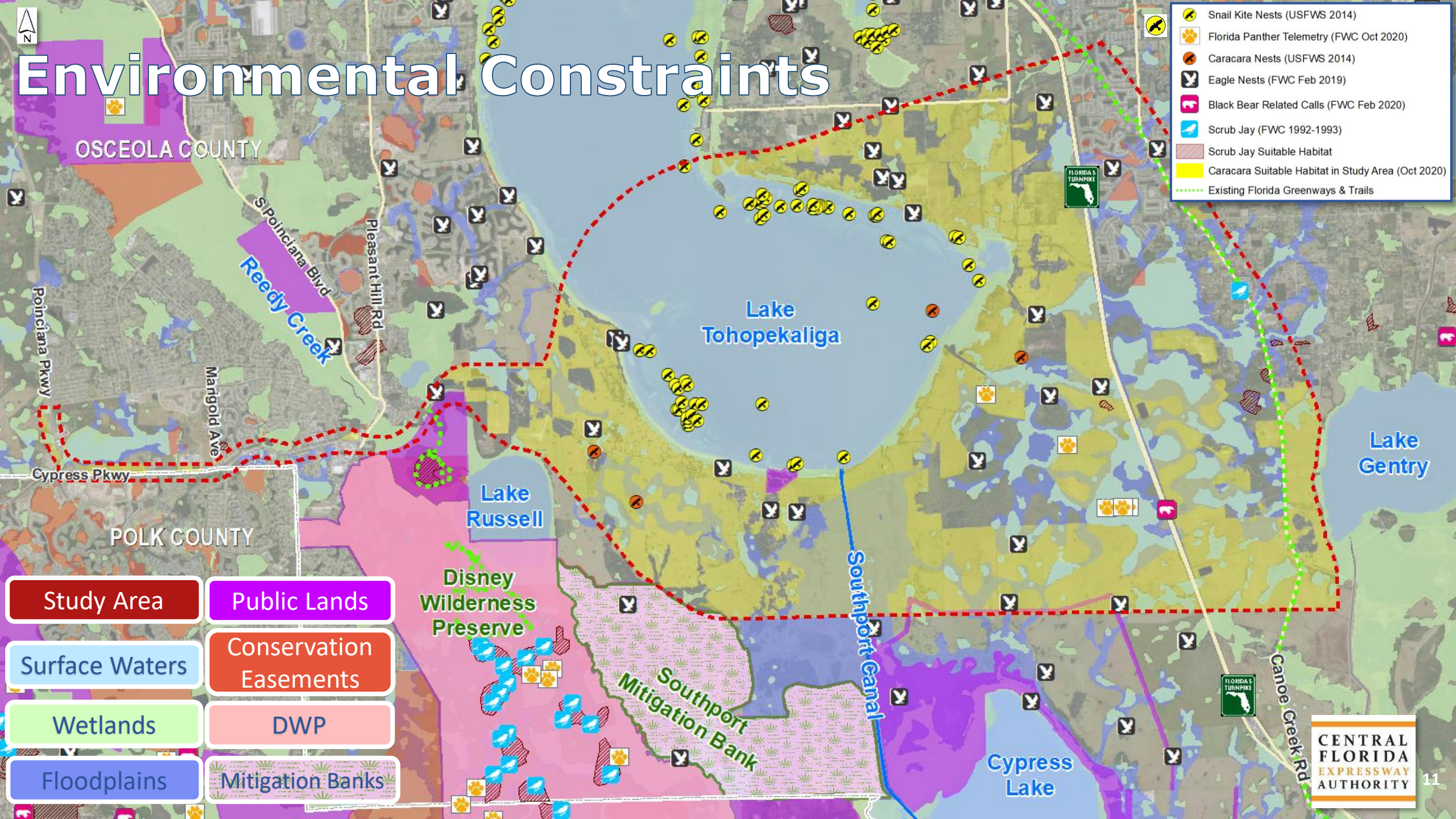


Cypress Lake

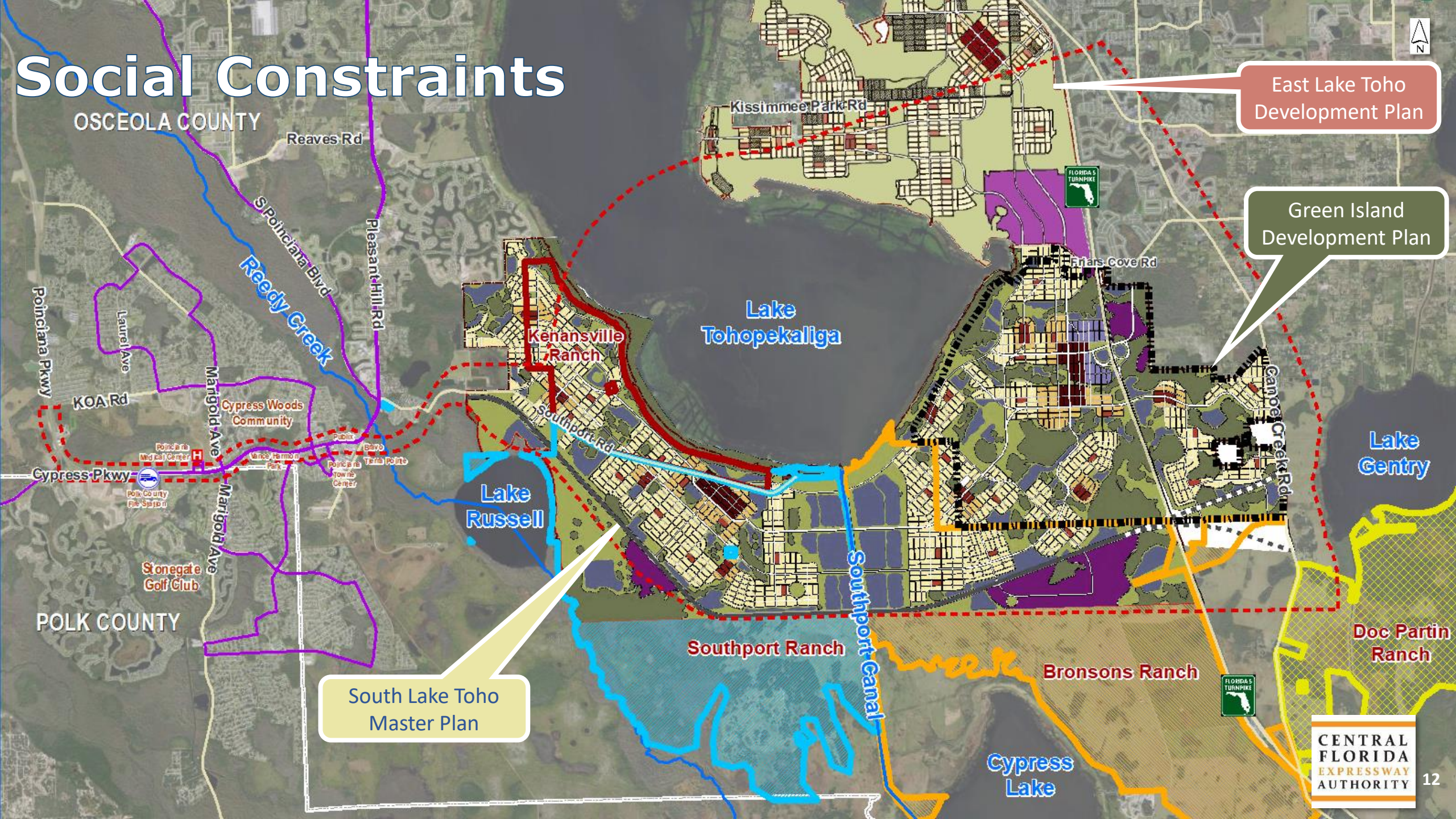
POLK COUNTY

CENTRAL
FLORIDA
EXPRESSWAY
AUTHORITY

Environmental Constraints



Social Constraints

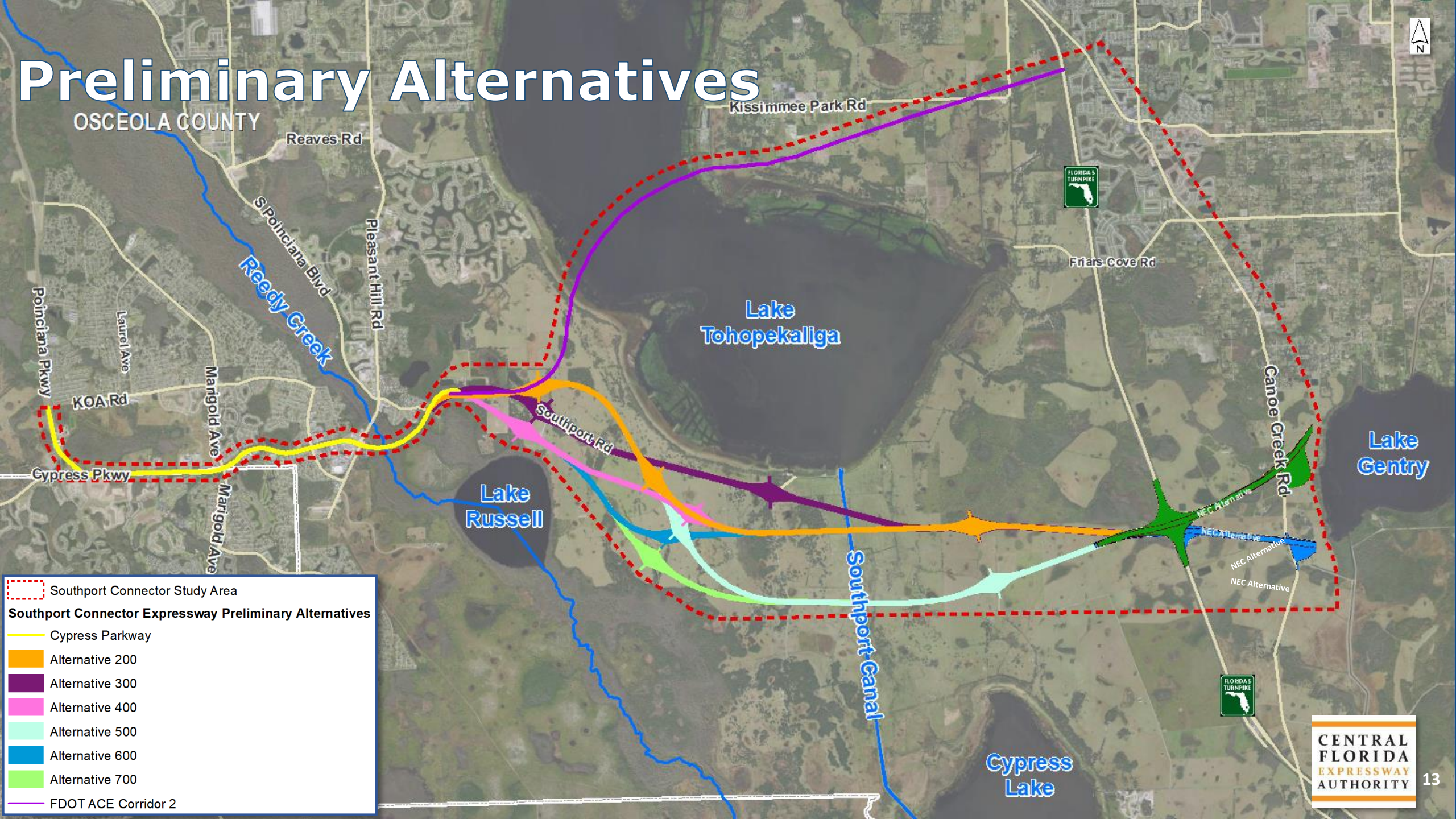


East Lake Toho Development Plan

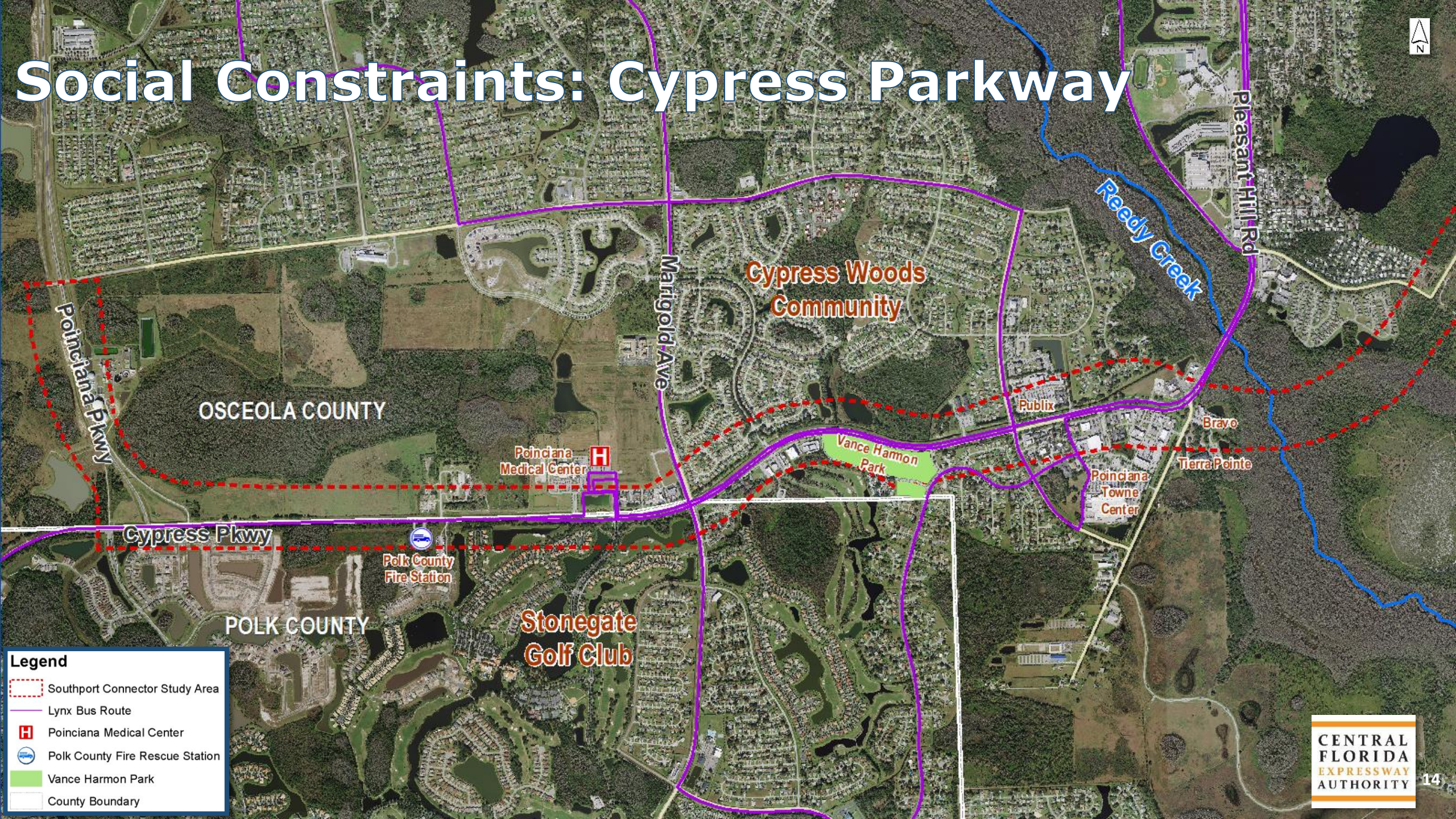
Green Island Development Plan

South Lake Toho Master Plan

Preliminary Alternatives



Social Constraints: Cypress Parkway

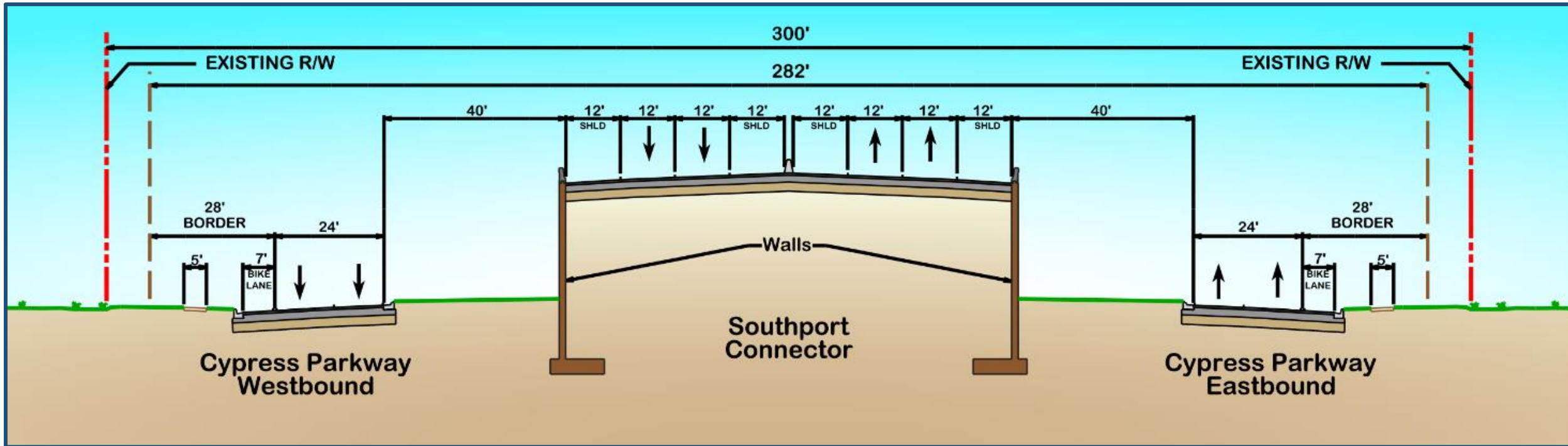


Legend

- Southport Connector Study Area
- Lynx Bus Route
- Poinciana Medical Center
- Polk County Fire Rescue Station
- Vance Harmon Park
- County Boundary

CF&M Study Results

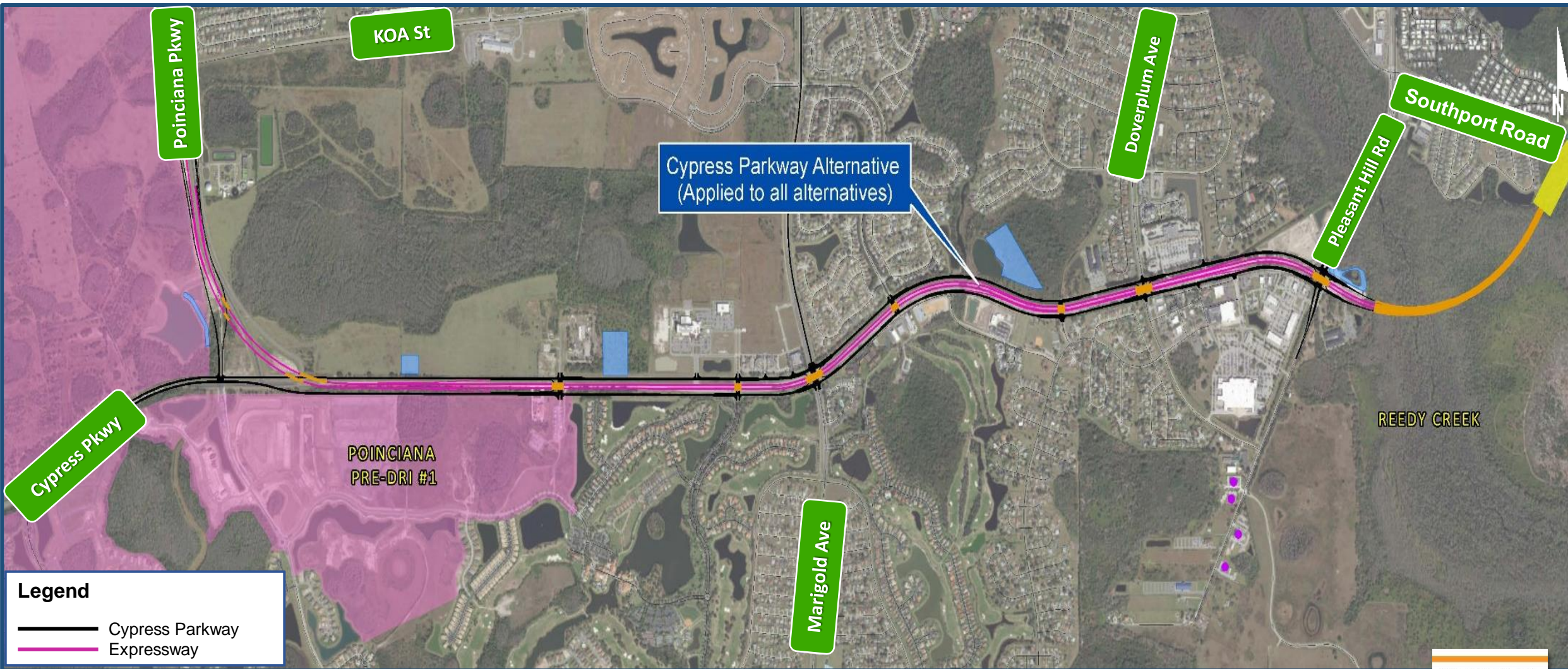
Poinciana Parkway to Pleasant Hill Road



Preliminary: Subject to Change

Design speed = 70 mph

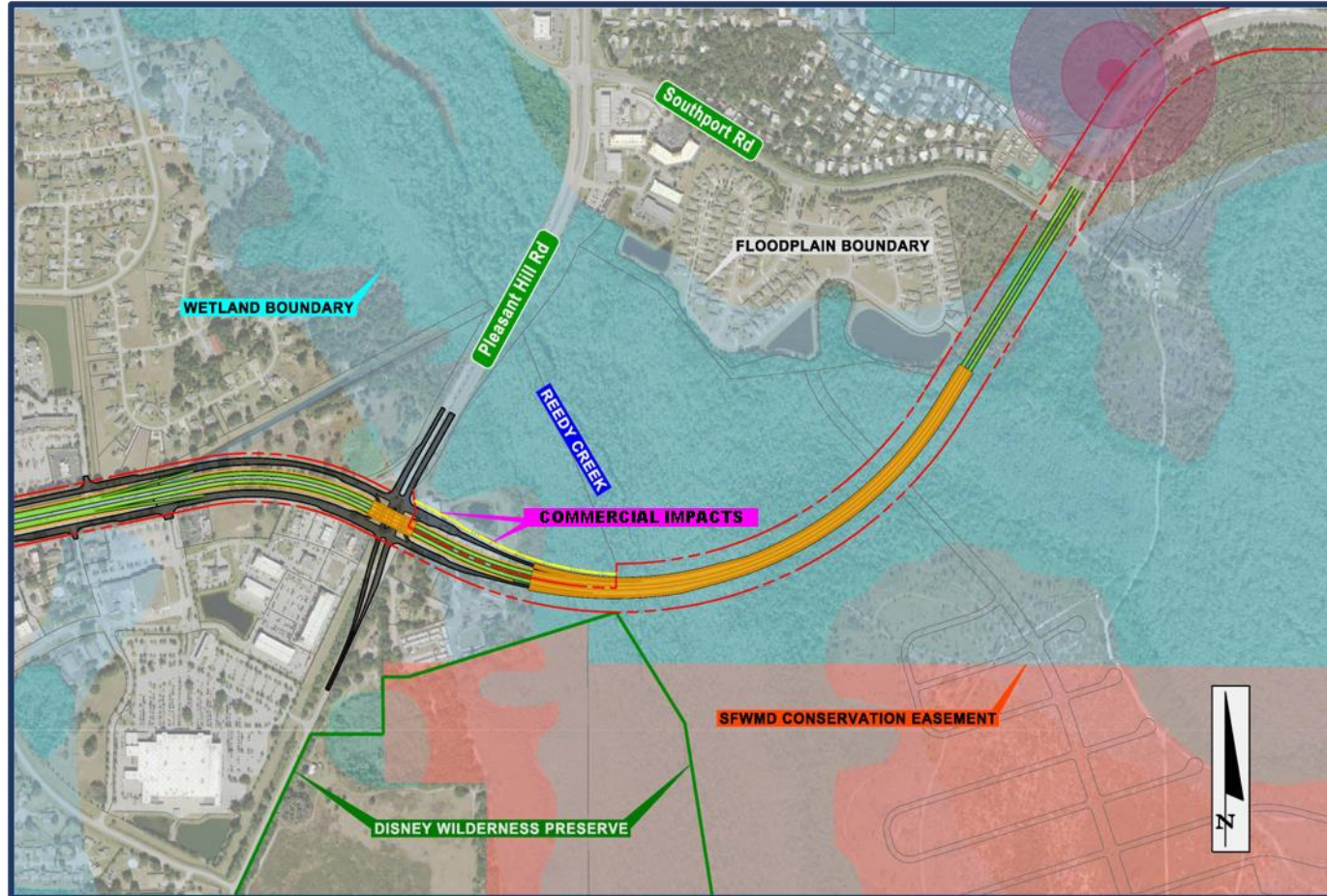
Cypress Parkway Segment: Key Issues



Preliminary: Subject to Change

East of Pleasant Hill Road

Key Issues: Environmental/Cultural

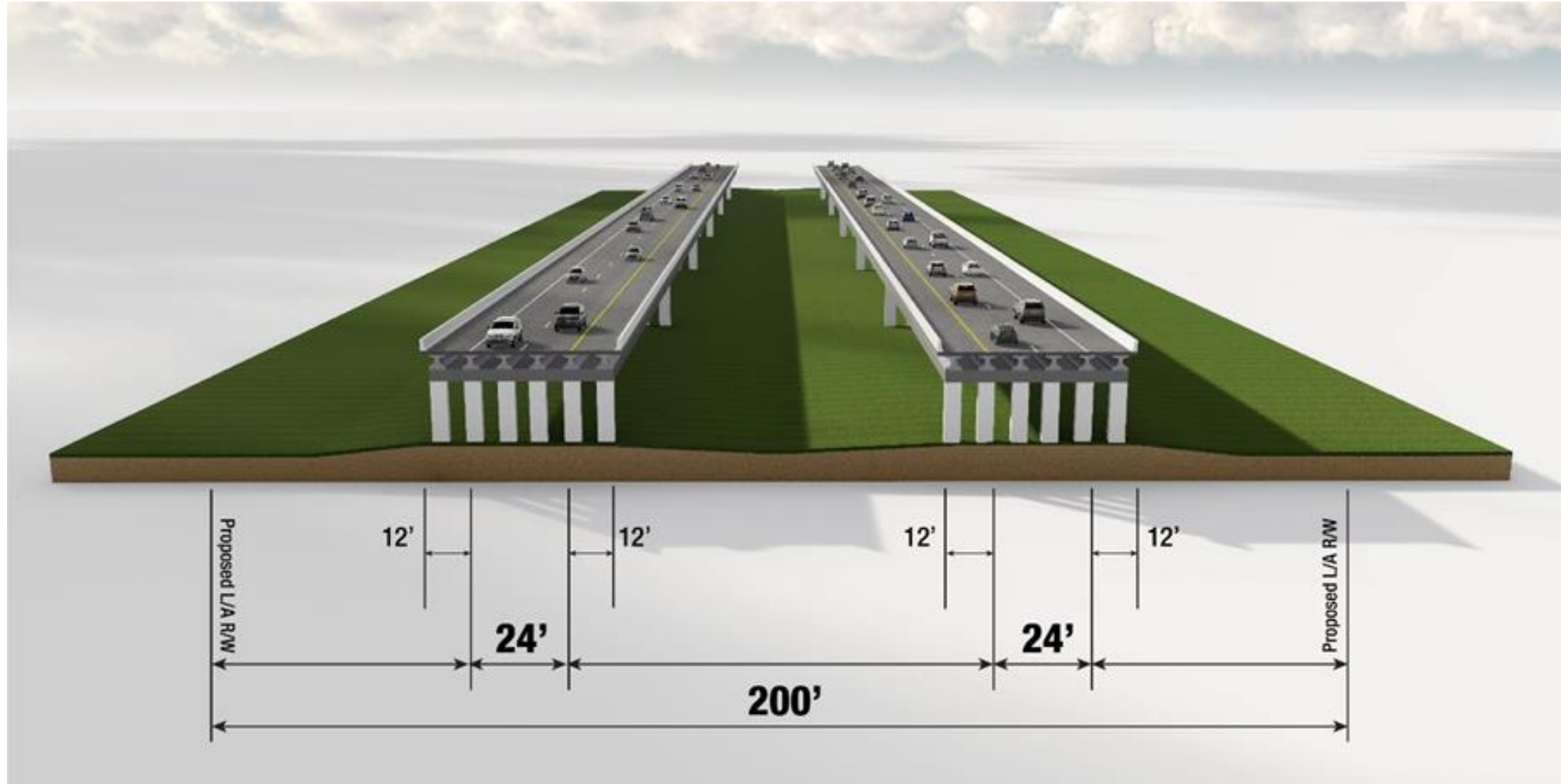


Preliminary: Subject to Change



Typical Section - Reduced

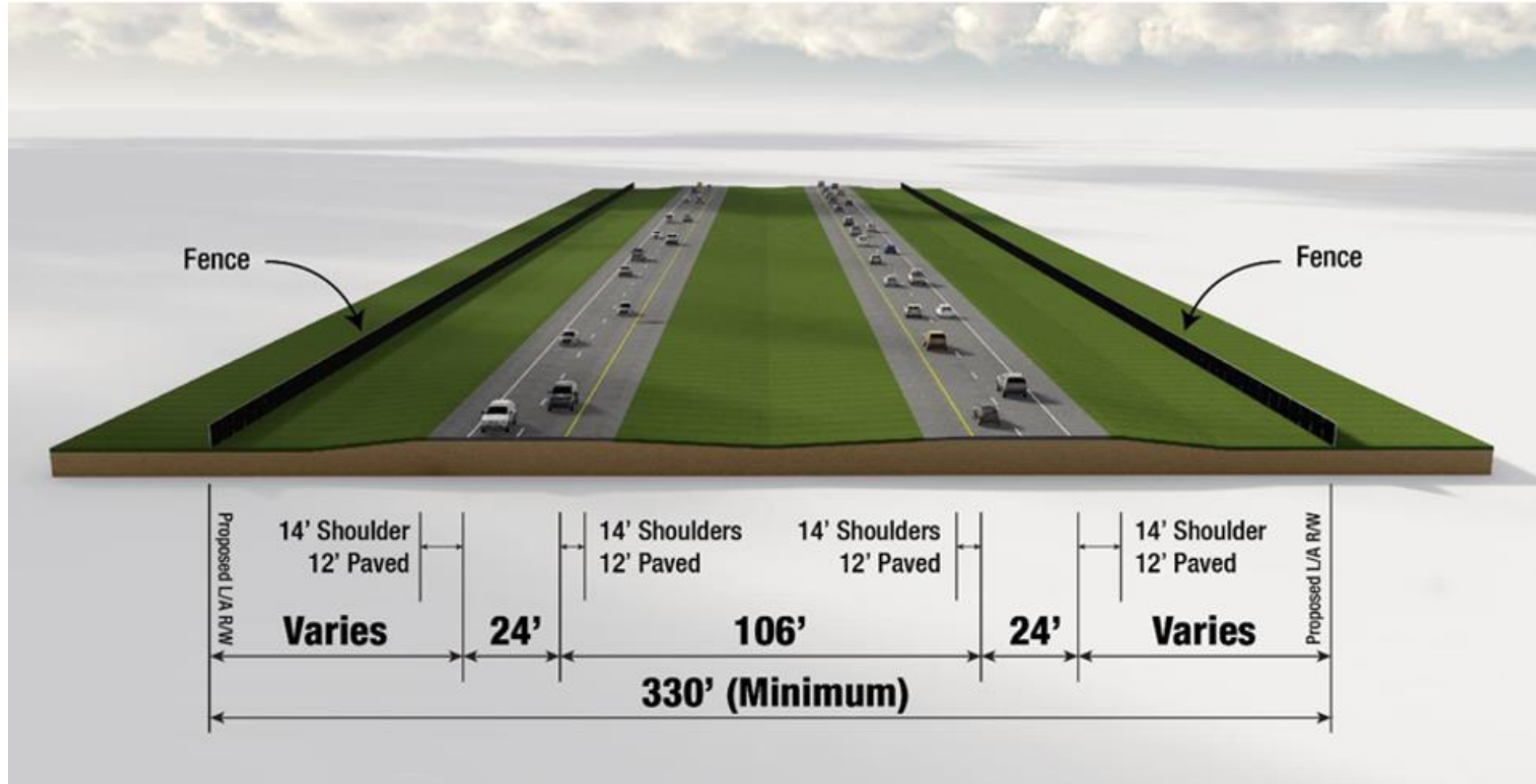
East of Pleasant Hill Road to end of Reedy Creek Bridge



Design speed = 70 mph

Typical Section

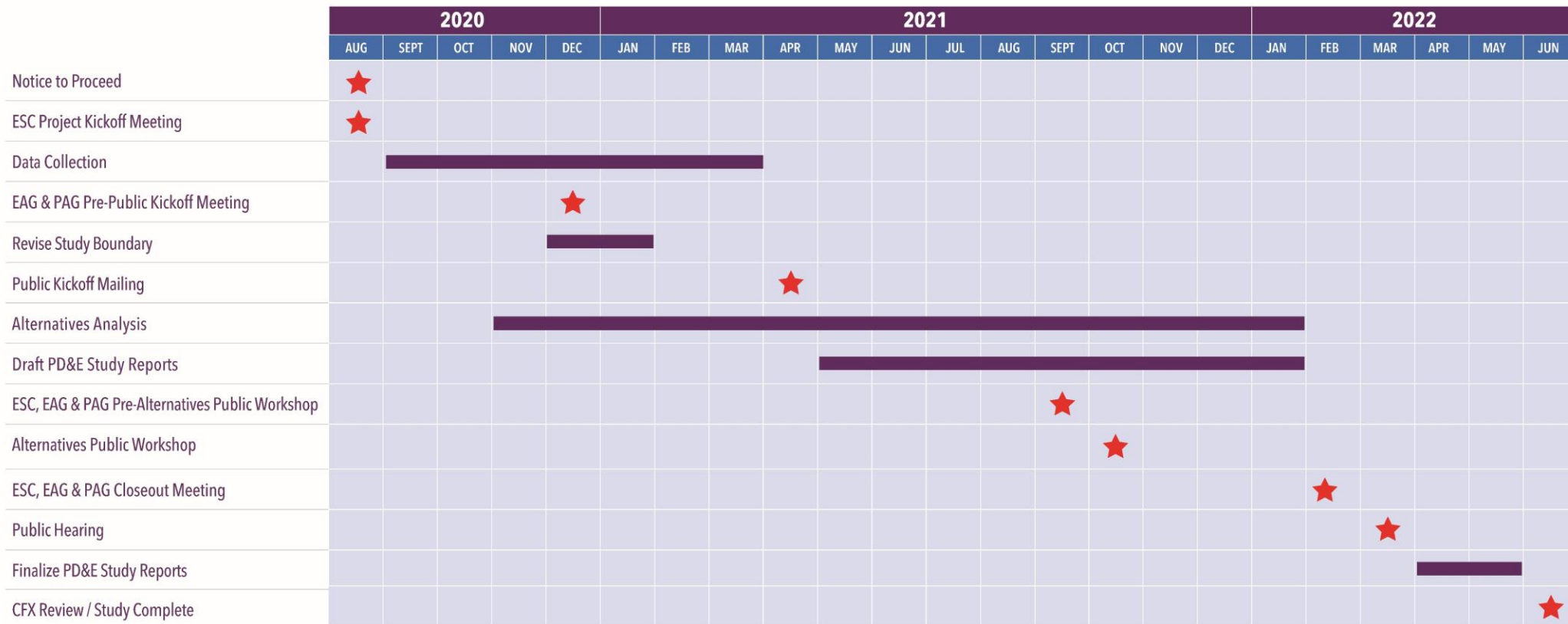
East of Reedy Creek Bridge to Canoe Creek Road



Design speed = 70 mph

Next Steps

Southport Connector Expressway PD&E Study Study Schedule (Subject to Change)



Concluding Comments and Questions

For more information contact:

Kathy Putnam
Public Involvement Coordinator
407-802-3210
ProjectStudies@CFXway.com

Ralph Bove
Consultant Project Manager
321-274-4777
ralph.bove@volkert.com

CFX web address:
www.CFXway.com
Shortened study web address:
<https://rb.gy/mnta4y>

An aerial photograph of a multi-lane highway. The road is dark asphalt with white lane markings. On the left side of the road, there is a grassy embankment and a line of trees. On the right side, there is a grassy shoulder and a guardrail. In the distance, a toll plaza is visible with several lanes. A large white car is driving in the right lane. The sky is clear and blue.

CENTRAL
FLORIDA
EXPRESSWAY
AUTHORITY

THANK YOU!