

**POINCIANA COMMUNITY DEVELOPMENT DISTRICT**  
**AMENDED AND RESTATED RULE RELATING TO USE OF DISTRICT TUNNELS**

**SECTION 1. INTRODUCTION.** This rule (the “Rule”) prohibits the operation of certain Motor Vehicles, as that term is defined by section 320.01, *Florida Statutes*, within Tunnels owned by the Poinciana Community Development District (the “District”).

**SECTION 2. DEFINITIONS.**

- A. *Golf Cart.* A Motor Vehicle designed and manufactured for operation on a golf course for sporting or recreational purposes which is not capable of exceeding speeds of twenty (20) miles per hour and which does not exceed seventy-eight (78”) inches in height. For purposes of this Rule, the definition of Golf Cart includes neighborhood electric vehicles and **Low Speed Vehicles (LSVs) as defined in Section 320.01(41), Florida Statutes** which are not capable of speeds exceeding twenty-five (25) miles per hour and which do not exceed seventy-eight (78”) inches in height.
- B. *Tunnels.* Two (2) tunnels owned by the District commonly referred to as the “Bella Viana tunnel” and “Venezia tunnel,” which are intended for primary use by Golf Carts, the location of which are as more particularly identified in the attached **Exhibit A**.

**SECTION 3. PROHIBITION OF THE OPERATION OF CERTAIN VEHICLES WITHIN THE TUNNELS.** The Board of Supervisors (the “Board”) of the District hereby prohibits the operation of the following vehicles within the Tunnels:

- a) Motor Vehicles licensed for use on public roadways or manufactured to be utilized on public roadways, with the exception of Golf Carts; and
- b) Motor Vehicles with hinged doors, with the exception of Golf Carts; and
- c) Three-Wheeled Vehicles; and
- d) Two-Wheeled Vehicles, such as Mopeds and Motorcycles.

**SECTION 4. MAINTENANCE MOTOR VEHICLES.** Notwithstanding the foregoing, Motor Vehicles used for maintenance of the golf course, common areas and areas owned by the District are permitted to operate within the Tunnels if approved in advance in writing by the District Manager.

**SECTION 5. SPEED LIMIT WITHIN THE TUNNELS.** No permitted vehicle shall operate within the Tunnels at a speed exceeding ten (10) miles per hour.

**SECTION 6. COMPLIANCE WITH FLORIDA LAW.** Golf Carts utilizing the Tunnels must otherwise remain compliant with the provisions of the Solivita Golf Cart Rules as amended from time to time, and Florida law relating to the operation of Golf Carts, including but not limited to the provisions set forth in Chapter 316, *Florida Statutes*.

Specific Authority: §§ 120.54, 190.011(5), and 190.041, *Fla. Stat.*

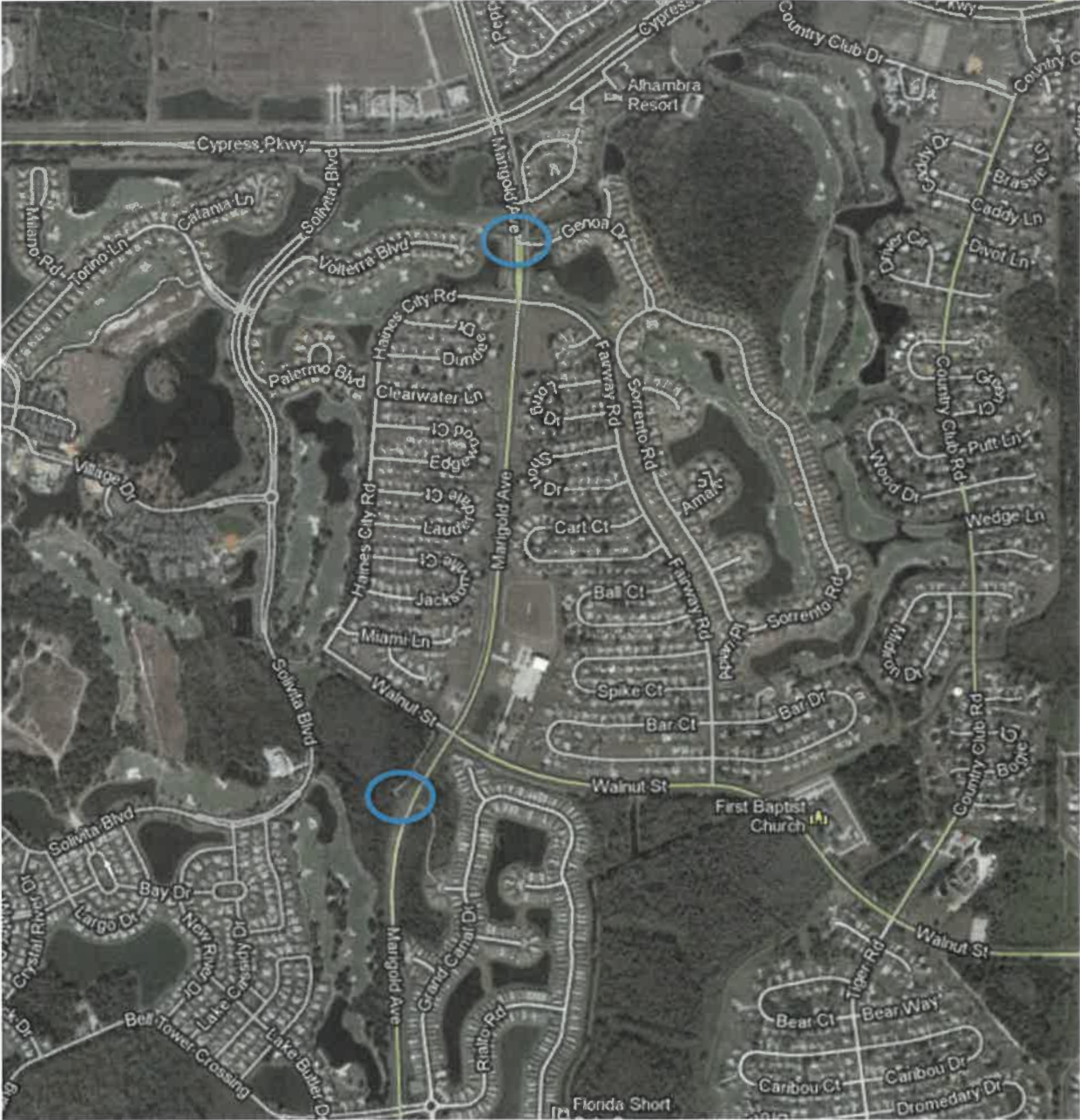
Effective date: June 8, 2016

**Amended and Restated July 20, 2022**

**Exhibit A**

**Map of Location of Tunnels**

Specific Authority: §§ 120.54, 190.011(5), and 190.041, *Fla. Stat.*  
Effective date: June 8, 2016



Map of Poinciana Community Development District (Solivita) North and South Tunnels