

# POINCIANA COMMUNITY DEVELOPMENT DISTRICT

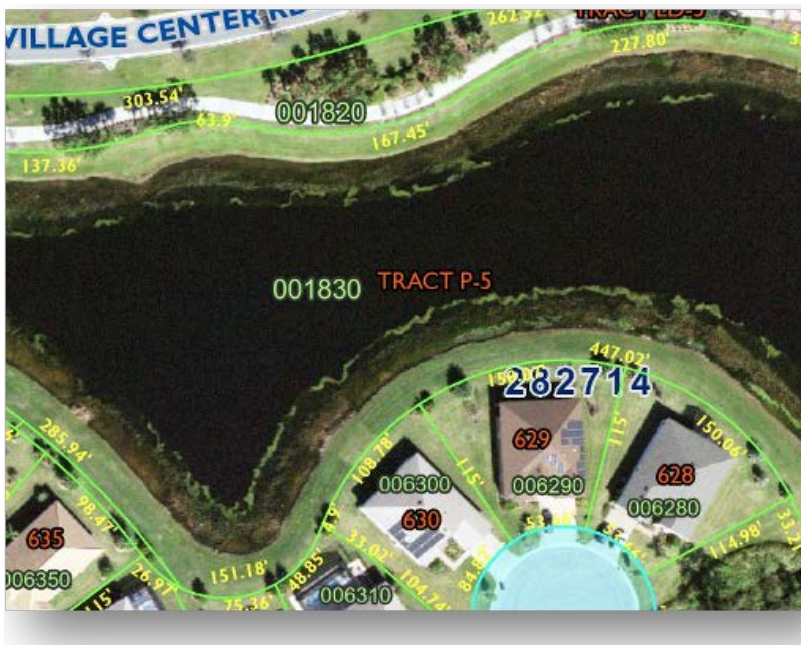


## STORMWATER POND SPECIFICATIONS

POND SPECS BASED ON \*P-5 AND F-5

The ideal pond spec would have evenly mowed easements, enough room for edge grasses to blend into the banks, implementation of the 80/20 rule (80% of the pond to have thriving littoral plantings with 20% open space to allow boat treatment, if needed).

Littoral plantings are usually planted 3 to 5 feet inside the pond. These beneficial plants improve water quality, prevent pond bank erosion, minimize habitat for mosquito breeding, and provide a habitat for pollinators.



# BENEFICIAL PLANTINGS

LITTORAL PLANTINGS CONSIDERED BEST PRACTICE FOR CENTRAL FLORIDA INCLUDE PICKERELWEED, SPIKERUSH, AND DUCK POTATO.

## SPIKERUSH

Spikerush is effective in utilizing water nutrients which assists in preventing nuisance algae blooms.

Spikerush is usually planted closest to the water's edge as it tolerates fluctuations in water levels.

There are more than 30 types of spikerushes growing in Florida alone!



## DUCK POTATO

Duck potato grows in natural marshes. It will grow in a damp muddy soil to 2 feet of water. It is an emergent that grows 2 to 4 feet tall. The plant has strong roots and can survive wide variations of the water level. Duck potato has shiny white flowers that grow on stalks.



## PICKERELWEED

Ideal for shallower portions of the pond. Grows 3-4ft. tall. It has creeping underwater rhizomes with heart-shaped leaves and violet-blue spikes extending about the water. Its beautiful flowers attract bees and butterflies, as well as dragonflies, which consume mosquito larvae.

One of the more aesthetically pleasing littoral plants.



VISIT [POINCIANACDD.ORG](https://poincianacdd.org) FOR CDD BOARD MEETING SCHEDULE AND OTHER HELPFUL INFORMATION

REPORT MIDGE, STORMWATER POND OR VENEZIA/  
BELLA VIANA TUNNEL MAINTENANCE CONCERNS TO  
[IMAN SAKALLA AT \(407\) 841-5524 EXT. 147](mailto:ISAKALLA@GMSFCFL.COM)  
OR [ISAKALLA@GMSFCFL.COM](mailto:ISAKALLA@GMSFCFL.COM)



*The mix of the three beneficial plants were planted along the residential property side of E3.*