

APPROVED: March 18, 2026

POINCIANA COMMUNITY DEVELOPMENT DISTRICT

FISHING AND STORMWATER POND POLICIES

1. Recreational fishing in Poinciana Community Development District (PCDD) ponds is permitted **AT YOUR OWN RISK**. The District is not responsible for any loss, damage, or injury to any person or property arising out of the authorized or unauthorized use of the PCDD ponds or any other property within the District. Fishing is permitted only from the banks of PCDD stormwater ponds (Ponds) from dawn to dusk and subject to the terms and conditions of this Policy. The Ponds may have steep banks and are not designed, nor permitted, for recreational use, and entry into or near the banks of the Ponds may be dangerous and could result in serious bodily harm. Entering into or wading in the Ponds is **STRICTLY PROHIBITED**.
2. While fishing, minors and guests of fishermen/fisherwomen (“Users”) are required to be supervised and accompanied by an adult (18 years of age or older).
3. The Ponds are a habitat for dangerous wildlife, including poisonous snakes, snapping turtles, and alligators. Be aware that wildlife, both in and near Ponds, may be present and active, posing a serious threat to personal safety. Feeding or approaching alligators or any other wildlife is **STRICTLY PROHIBITED**. Wildlife may not be removed from or released into the Ponds. Anyone concerned about a nuisance alligator should contact the Florida Fish and Wildlife Conservation Commission’s toll-free Nuisance Alligator Hotline at 866-FWCGATOR (866-392-4286).
4. The Ponds are designed to gather and filter pollutants before they enter nearby natural bodies of water. Therefore, the Ponds may contain pollutants such as sediments, oils, grease, trash, heavy metals, pesticides, herbicides, and pathogens. Contact with the Ponds may be hazardous to health and safety. All fishing in the Ponds is strictly on a catch and release basis.
5. All trash must be properly disposed of off-site, including but not limited to fishing lines (which can be a serious hazard to wildlife).
6. Boating on any Pond, canal, or culvert for any purpose other than maintenance or repair authorized by PCDD is **STRICTLY PROHIBITED**.

7. Alteration of the Ponds, including adding or removing plantings and vegetation, for any purpose is STRICTLY PROHIBITED. The PCDD retains all rights and remedies to pursue and collect costs for any damage to PCDD property or fines and penalties for noncompliance with stormwater permits.
8. The use of golf carts on any Pond bank or adjacent landscape buffer, or on any PCDD property that is otherwise adjacent to any Pond bank, canal, or culvert is STRICTLY PROHIBITED. No Parking of golf carts or any other vehicles on grassy or landscaped areas near or contiguous to the Ponds is prohibited.
9. The PCDD has identified the Ponds and locations where fishing is preferred (see attached map) and such locations are identified with appropriate signage. In addition to this policy, all users shall obey all posted signage in connection with use of the Ponds. At all times, fishing in the Ponds shall occur only from PCDD property. Residential/private property shall not be utilized or walked over to gain access to fishing areas. Easements through residential backyards along the community's stormwater management system are for PCDD maintenance purposes only and are not grants for access for fishing or any other recreational purpose. In order to fish in the Ponds, Users must gain access to the Ponds via common access areas.
10. Residents have a reasonable expectation of privacy and security, so Users should use common sense and respect when fishing on PCDD property so as not to trouble, inconvenience, or interfere with the peaceful enjoyment of the adjacent property by and of the homeowner. Upon request by the adjacent homeowner to move to an alternate location, the User shall immediately relocate to another location.
11. All fishing shall comply with all applicable state and local laws, ordinances, codes, regulations, and permits. All Users should be aware of and comply with Florida Fish and Wildlife Conservation Commission's guidelines for freshwater fishing, including licensing requirements, to promote responsible fishing. Notwithstanding anything to the contrary herein, if the PCDD shall at any time receive notice from any governmental agency or authority that the use(s) of the Ponds described herein violate any applicable state or local laws, ordinances, codes, regulations, permits or otherwise may place additional liability on the PCDD, the PCDD retains the right in its sole discretion to rescind this policy immediately, without notice; however, a statement shall be made at the next available PCDD Board meeting.

12. All Users shall comply with all PCDD directives in connection with the Ponds, including, but not limited to, temporary closure of the Ponds for maintenance, repair or any other reason within the sole discretion of PCDD.

Any stormwater pond maintenance or other PCDD issues should be immediately reported to the PCDD District Manager's office at (407) 841-5524, ext. 147.

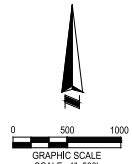
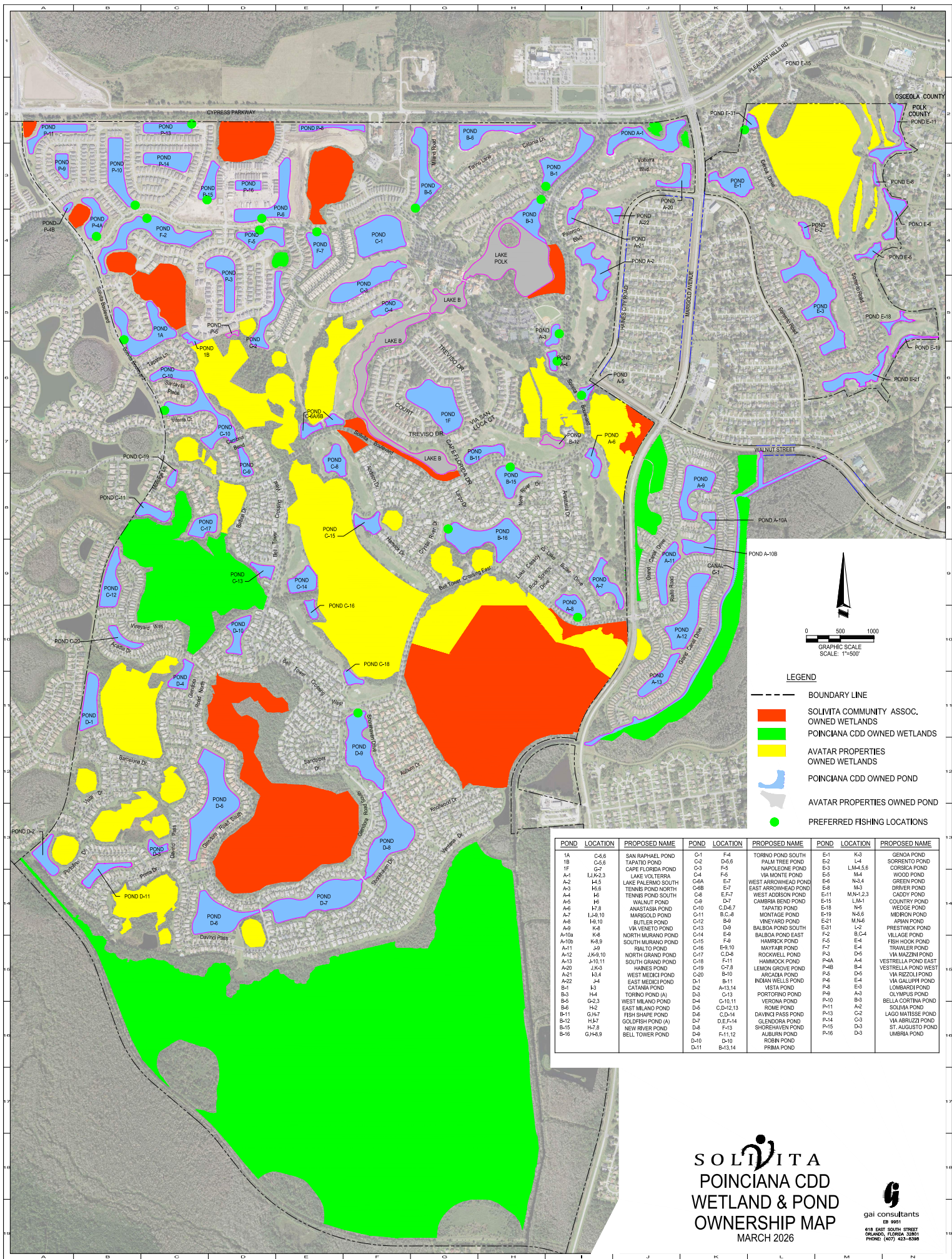
Adopted this 18th day of March, 2026.

Signed by:

JON CAMERON

C3C19ED3E27C4AF

Chair – Poinciana PCDD



- LEGEND**
- BOUNDARY LINE
 - SOLIVITA COMMUNITY ASSOC. OWNED WETLANDS
 - POINCIANA CDD OWNED WETLANDS
 - AVATAR PROPERTIES OWNED WETLANDS
 - POINCIANA CDD OWNED POND
 - AVATAR PROPERTIES OWNED POND
 - PREFERRED FISHING LOCATIONS

POND	LOCATION	PROPOSED NAME	POND	LOCATION	PROPOSED NAME	POND	LOCATION	PROPOSED NAME
1A	C-5.6	SAN RAPHAEL POND	C-1	F-4	TORINO POND SOUTH	E-1	K-3	GENDA POND
1B	C-5.6	TAPATIO POND	C-2	D-5.8	PALM TREE POND	E-2	L-4	SORRENTO POND
1F	G-7	CAPE FLORIDA POND	C-3	F-5	NAPOLEONE POND	E-3	LM-4,5,6	CORSICA POND
A-1	LJK2,3	LAKE VOLTERRA	C-4	F-6	VIA MONTE POND	E-5	M-4	WOOD POND
A-2	H-5	LAKE PALERMO SOUTH	C-5	F-7	WEST ARROWHEAD POND	E-6	N-4	GREEN POND
A-3	H-6	TENNIS POND NORTH	C-6	E-7	EAST ARROWHEAD POND	E-8	M-3	DRIVER POND
A-4	H-6	TENNIS POND SOUTH	C-8	E-7	WEST ADDISON POND	E-11	M-N-1,2,3	CADY POND
A-5	H-5	WALNUT POND	C-9	D-7	GAMBRIA BEND POND	E-15	L-6,1	COUNTRY POND
A-6	H-7.8	ANASTASIA POND	C-10	C,D-7	MONTAGE POND	E-18	N-6	WEDGE POND
A-7	LJ-8,10	MARGOLDS POND	C-11	B,C-8	CAMBRIA POND	E-19	N-5,6	MIDRON POND
A-8	H-10	BUTLER POND	C-12	B-9	BALBOA POND SOUTH	E-21	M-6,7	AFRAN POND
A-9	K-8	VIA VENETO POND	C-13	D-9	BALBOA POND EAST	E-31	L-2	PRESTWICK POND
A-10a	K-8	NORTH MURANO POND	C-14	E-9	HAMBROCK POND	F-2	B,C-4	VILLAGE POND
A-10b	K-8,9	SOUTH MURANO POND	C-15	F-9	ROCKWELL POND	F-3	D-5	FIBR HOOK POND
A-11	J-9	RIALTO POND	C-16	E-10	VINEYARD POND	F-7	E-4	TRAVLER POND
A-12	JK-5,10	NORTH GRAND POND	C-17	C,D-8	LEMON GROVE POND	F-8	D-5	VIA MAZZINI POND
A-13	L-10,11	SOUTH GRAND POND	C-18	F-11	ARCADIA POND	F-9	E-4	VIA GALLUP POND
A-20	JK-3	HAINES POND	C-19	C-7,8	INDIAN WELLS POND	F-10	B-3	LOMBARDI POND
A-21	H-3,4	WEST MEDICIA POND	C-20	B-10	VISTA POND	F-8	D-5	VIA RIZZOLI POND
A-22	J-4	CATANIA POND	D-1	B-11	PORTOFINO POND	F-9	A-3	OLYMPUS POND
B-1	K-3	TORINO POND (A)	D-2	A-13,14	VERONA POND	P-10	C-2	BELLA CORSTINA POND
B-3	H-4	WEST MILANO POND	D-3	C-13	ROME POND	P-11	A-2	SOLIVIA POND
B-4	G-2,3	EAST MILANO POND	D-4	C-10,11	DAVICCI PASS POND	P-13	C-2	LAGO MATISSE POND
B-6	H-2	FISH SHAPE POND	D-5	C,D-12,13	CLENDARA POND	P-14	C-3	VIA ABRUZZI POND
B-11	H-17	GOLDFISH POND (A)	D-6	C,D-14	SHOREHAVEN POND	P-15	D-3	ST. AUGUSTO POND
B-12	H-17	GOLDFISH POND (B)	D-7	D,E-14	ALBURN POND	P-16	D-3	UMBRIA POND
B-15	H-7,8	NEW RIVER POND	D-8	F-13	ROBIN POND			
B-16	G,H-8,9	BELL TOWER POND	D-9	F-11,12	PRIMA POND			
			D-10	D-10				
			D-11	B-13,14				

SOLIVITA
POINCIANA CDD
WETLAND & POND
OWNERSHIP MAP
 MARCH 2026

618 EAST SOUTH STREET
 ORLANDO, FLORIDA 32803
 PHONE (407) 423-0300